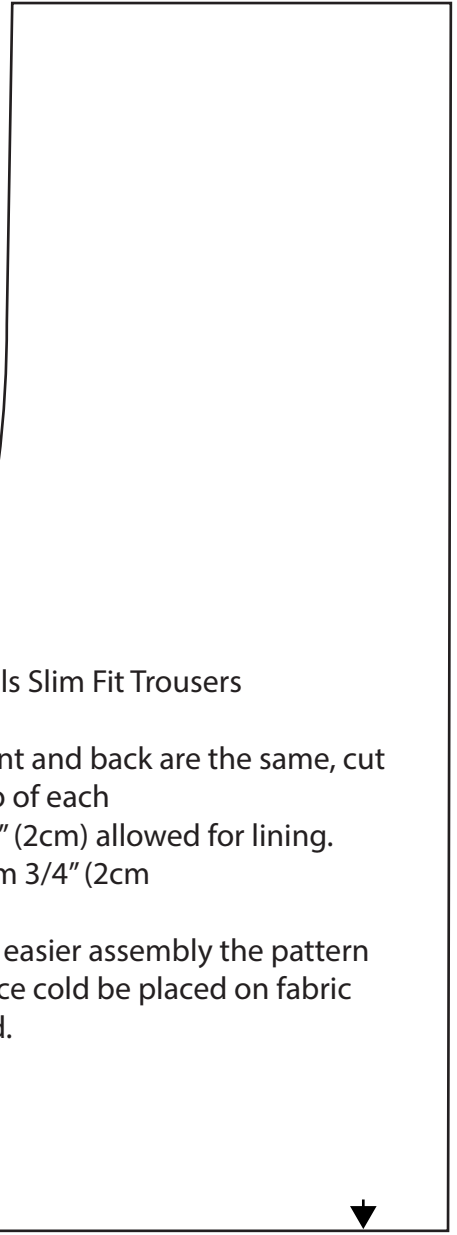
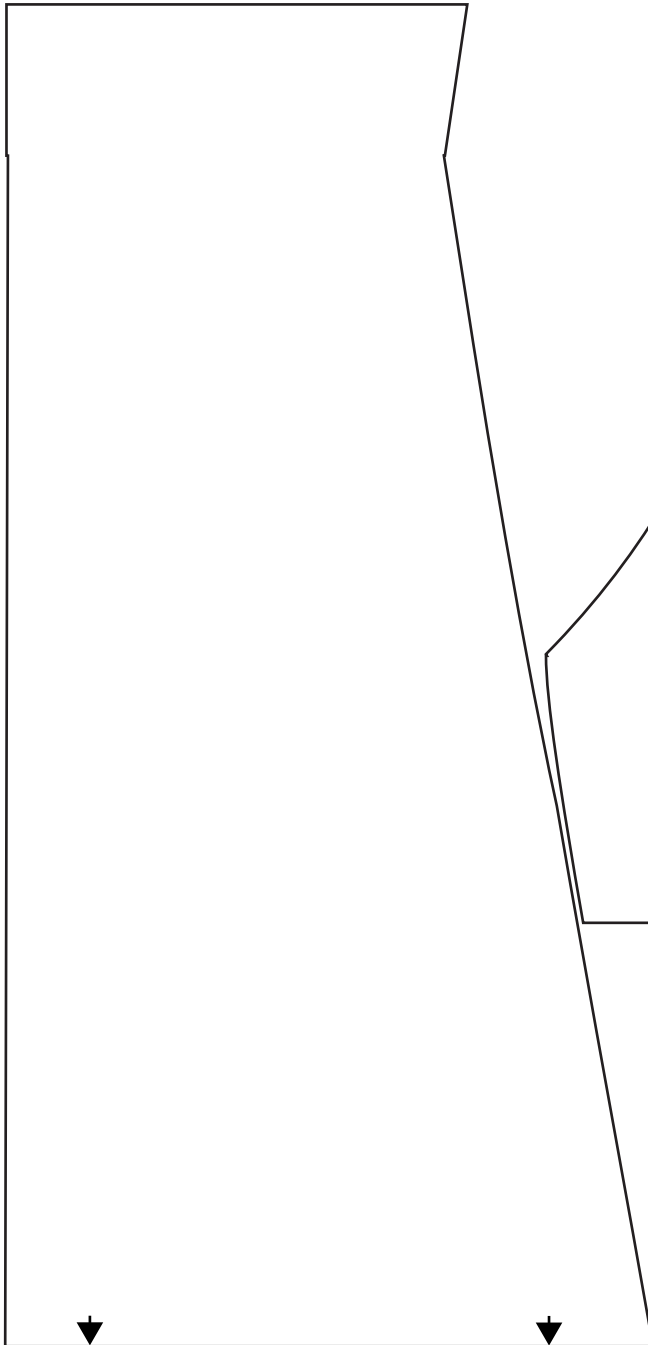


Dolls Slim Fit Trousers



Dolls Slim Fit Trousers

Front and back are the same, cut two of each
3/4" (2cm) allowed for lining.
Hem 3/4" (2cm)

For easier assembly the pattern piece could be placed on fabric fold.

This pattern is specially made for the ragdoll collection

1/4" (6mm) seam allowance is included unless otherwise stated in the instruction.

